



CAPABILITY STATEMENT



Reactive | Reliable | Readied



A photograph showing several orange-colored pipes laid out in a trench. The pipes are arranged in a slightly curved line, and the surrounding soil is a mix of brown and grey. The lighting is natural, highlighting the texture of the pipes and the ground.

OUR VISION

To be the company
of choice for the
best services and
practices, within
the civil industry.

WHO WE ARE

Tron Civil Contracting has worked in successful partnership with industry leaders throughout South Australia, more than 50 years.

Our company is well established and stable, yet also capable of rapid review and assessment, confident decision making and change management.

Tron Civil Contracting is respected as a leader in our field, with more than 30 highly qualified, experienced and dedicated personnel.

OUR MISSION

To be safe and responsive and to exceed our customer's expectations, by providing value added services and solutions through dedication and excellence to the civil industry.



Every project is a partnership,
whether we're working as the
lead contractor, sub-contractor
or in a joint venture.





OUR EXPERTISE

For Tron Civil Contracting every new project is not just a project but a partnership, whether we're working as the lead contractor, sub-contractor or in a joint venture.

We endeavour to have an open-minded approach to each new project with the same passion as the first.

We continue to develop from our greatest strength with the ability to draw together the diversity of our personnel's knowledge and experience.

Tron Civil has extensive experience in all facets of civil construction including:

- bulk earth works,
- directional drilling,
- landscaping, site remediation and rehabilitation,
- utility and service installation,
- roads, concrete works,
- pump stations, sub-stations, construction,
- urban stormwater, re-use schemes, wetlands construction,
- utility and service installation,
- underground services location, electronic, concrete scanning and ground penetrating radar (GPR),
- commercial and industrial site works, plant and equipment hire.

We also work extensively with environmental and waste management industries.



CORE CAPABILITIES



TRANSPORT FLEET OF MORE THAN 50

maintained compliant vehicles of varying specification and capacity



ABILITY TO DELIVER ON A LARGE SCALE



ENVIRONMENTAL AND WASTE MANAGEMENT

landscaping, site remediation and rehabilitation is always undertaken



SUPPLY OF HIRE EQUIPMENT

with experienced and qualified operators



GROUND PENETRATING RADAR

Our GPR systems empower informed decision-making.



With a passion to meet and exceed our goals,
we encourage our personnel to lead and to
own the improvements from every project.



OUR COMMITMENT

We are committed to providing a safe environment for our workforce. The company has a proven safety record and maintains a high level of environmental integrity, awareness and responsibility. We continue to challenge the norm and with an obsession for making a difference we deliver results.

Reliability, respect, know-how and novel thinking shape the solid reputation that fuels our growth.

Longstanding business relationships repeat business and continued contract renewal with numerous respected clients are testament to the quality and reliability of our work and consistent cost-effective delivery.

We regularly work in partnership with medium to large businesses, government bodies, developers and individuals on long and short-term projects.

Consider how Tron Civil can help steer the success of your next civil construction project, because, our desire and determination to deliver solutions steers our success.



Our goals are to meet yours - on budget, on time, every time.



QUALITY ASSURANCE

At Tron Civil, safety, health, environmental, quality and the community are our highest priority and so far, as is reasonably practicable, will not be compromised. A workplace free of incidents and injuries is our objective.



Our aims and objectives

- Applicable health and safety laws, regulations and statutory obligations, so far as is reasonably practicable, will be exceeded.
- Our quality of work will be of a high standard within the civil industry.
- With respect to our operations, we will ensure that SHEQ practices will be incorporated into all aspects of our operations and we have an absolute commitment to safe work practices and a healthy work environment.
- We will work with our clients / stakeholders to ensure a positive outcome for all operations that we undertake.
- We will seek to achieve a SHEQ commitment of all employees, subcontractors, suppliers and consultants for a safe workplace.
- There will be no job, so important, that it will compromise safety to our operations. Provide training to our employees relevant to the nature and scale of work undertaken.
- Communicate to all employees, customers and other stakeholders the Tron Civil Contracting Safety, Health, Environment and Quality (SHEQ) Policy and Procedures as appropriate to ensure they are aware of their obligations with respect to our operations.
- Plant and equipment will be maintained in a safe operating manner.
- Review and revise the SHEQ Management System to ensure compliance.
- Instil a positive safety / working culture at Tron Civil Contracting.
- We will endeavour to be an excellent corporate citizen, by implementing and following sound standards and ethics.
- With the assistance of all individuals we will achieve and maintain a safe workplace.



EQUIPMENT

- 2400mm Grader Blade to suit 299D2
- Augur extensions
- Augurs (200mm - 1500mm)
- Barricade meshing
- Cattle grids
- Chain digger attachment
- Con-cuts
- Conduit rodders
- Core drill (50mm - 150mm)
- Electrofusion equipment
- Forklift
- Gas detectors
- Generators
- Jack hammer
- Ladders
- Leg rammers
- Mulcher HM315C, High Flow to suit 299D2
- Night lights
- PD drives
- Pedestrian fence
- Pneumatic thumpers (63mm - 120mm)
- Ramps (3.6t - 11.5t)
- Road saw
- Road sweeper attachment
- Rock breaker
- Shipping containers
- Sludge pumps
- Sound barriers
- Spreader bar
- Steel plates
- Stobie pole formers
- Subsite electromagnetic locators
- Subsite GPR
- Temporary fence
- Tenant sweeper
- Tents
- Traffic management signs
- T-Top bollards
- Various hand tools
- Vibrating plates
- Vibrating shaft

MACHINERY

Backhoes

- 428D Backhoe
- 432E Backhoe

Excavators

- Caterpillar 301.7D Excavator
- Caterpillar 301.7DCR Excavator
- Caterpillar 303CR Excavator
- Caterpillar 303.5ECR Excavator
- Caterpillar 303.5ECR Excavator
- Caterpillar 304E2 Excavator
- Caterpillar 304DCR Excavator
- Caterpillar 305CR Excavator
- Caterpillar 307C Excavator
- Hitachi EX130H Excavator

Hydro Excavation Units

- FXT65 Hydro truck
- FX65 Hydro truck
- FX50 Hydro truck
- FX30 Hydro truck
- FX20 Hydro trailer

Trucks

- 2T Dropsides
- 3T Isuzu tipper
- 8T Isuzu tipper
- 8T Hino tipper
- 8T Mitsubishi tipper
- 8T Isuzu tipper
- 11T Flatbed truck
- 11T Flatbed truck with ramps
- 12T Mack tipper

MACHINERY

Support Vehicles

- Hino Rigid Truck
- Hino Rigid Truck
- Isuzu NQR450 Long Truck
- Isuzu NQR450 Long Truck
- Isuzu NQR450 Long Truck
- Isuzu NQR450 Long Truck
- Isuzu NQR200

Trailers

- 3T Plant Trailer
- 3T Plant Trailer
- 4T Plant Trailer
- 11T Plant Trailer
- 11T Plant Trailer
- 15T Plant Trailer
- 15T Plant Trailer
- Tip Trailer
- Pipe trailer

Directional Drilling

- DitchWitch JT2020
- DitchWitch JT5

Front End Loader

- Caterpillar 914 Front End Loader

Compact Track Loader

- Caterpillar 299D2

Skidsteer

- Caterpillar 246C Skid steer

OUR ACCREDITATIONS





**TRON CIVIL
CONTRACTING PTY LTD**

15-21 Bremen Drive
Salisbury South SA 5106

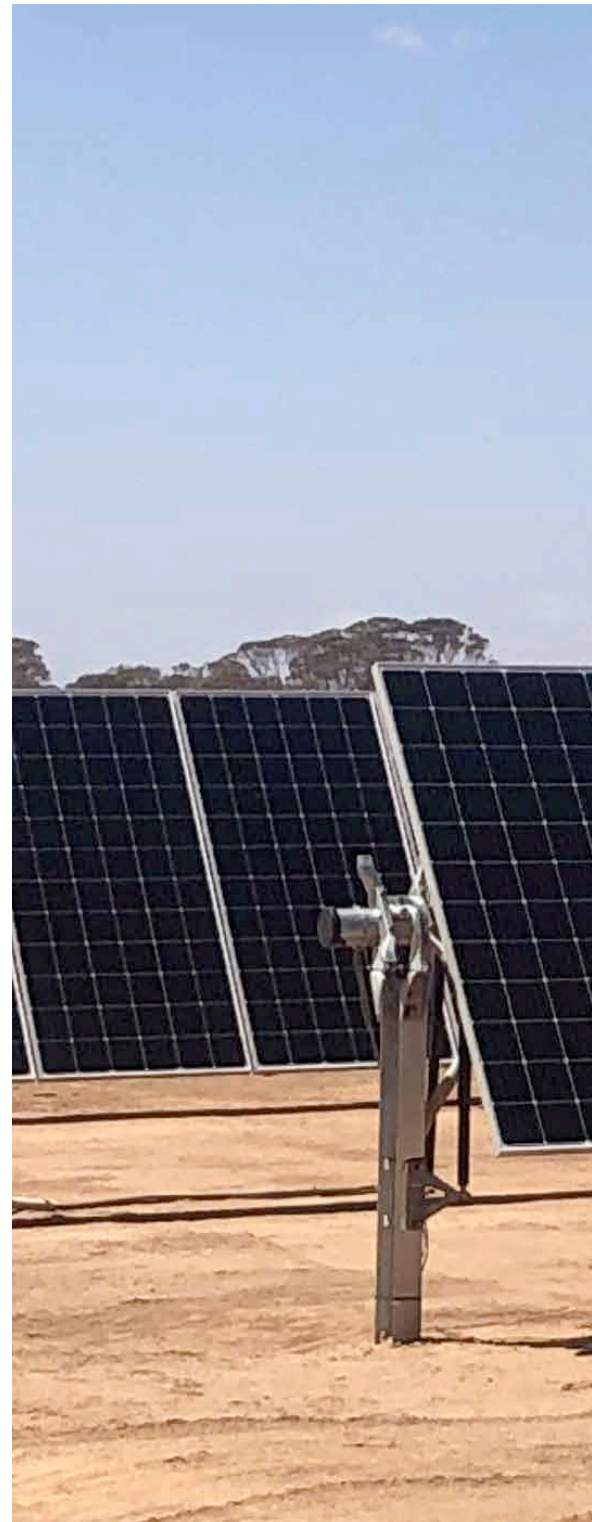
T 08 8281 3860
F 08 8281 0278
troncivil@troncivil.com
www.troncivil.com

ACN 008 086 851
ABN 98 008 086 851
BLDRS LIC R55770



OUR SERVICES

24HR on call services
Asbestos removal (Up to 10m²)
Auguring 150mm - 1.5m diameter to 8m in depth
Bitumen repairs
Bulk earthworks
Bunding
Cattle grid hire
Concrete and paving reinstatements
Concrete/bitumen cutting and coring
Conduit clearing
Conduit installation
Contaminated soil removal
Demolition
Detailed earthworks
Directional drilling
Excavating and trenching
Horizontal pneumatic boring
Hydro carbon spill clean ups
Hydro excavation, liquid and solid waste removal
Landscaping
Manhole construction (pre-cast and insitu)
Mulching (Up to 200mm diameter tree)
Pedestrian fencing hire
Pit and pipe installation
Plant, machinery and labour hire
Project management
Removal and installation of pits
Retaining walls
Rock breaking
Route proving
Rubble supply
Sand supply
Secondary Containment installations
(Hydrocarbons)
Service Utilities Locating (Electromagnetic
and Ground Penetrating Radar (GPR))
Sound Barrier temporary fencing hire
Steel plate hire
Stobie pole footing
Stormwater installation (Pipe and culvert)
Structure and concrete works
Temporary fencing hire
Track and pad construction
Traffic management services
Trenching



Proudly supporting

